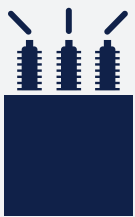


# Overview of JEMA

THE JAPAN ELECTRICAL MANUFACTURERS' ASSOCIATION





## What is JEMA?

The Japan Electrical Manufacturers' Association (JEMA) is an industrial association, consisting of the companies and business associations which are involved in Japanese electrical machinery industry ranging from the supply side of the power such as power generation and transmission infrastructure equipment to its demand side such as industrial system equipment and home electrical appliances.

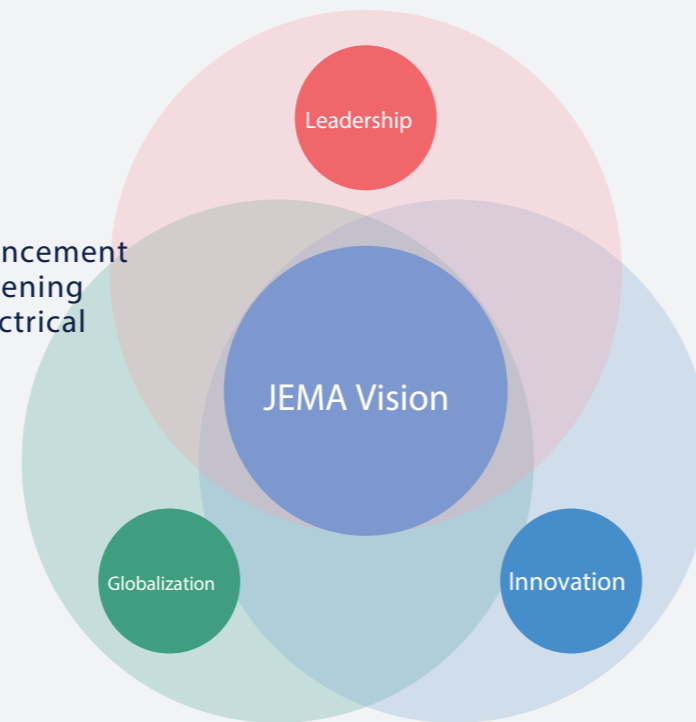
One year after its establishment in 1948, JEMA took over the mission of, by merging and amalgamating, the "Japan Electrical Machinery Manufacturers' Association," which had descended from an information exchange group of electrical machinery manufacturers.

In 1954, JEMA was authorized as an incorporated association, and in 2011 it has shifted to a general incorporated association under a new legislation.

## JEMA Vision

JEMA will contribute to sustainable global development through improvement and enhancement of social and living infrastructures by strengthening international competitiveness of Japanese electrical machinery equipment industry.

With this vision in mind and from the three key viewpoints of Leadership, Innovation and Globalization, JEMA will provide further development and problem solutions to the Japanese electric machinery industry by fulfilling its mission and role.



## Priority Issues in FY2024

- Aiming to Contribute to Carbon Neutrality by 2050 -

# 1

### Towards sustainable society through promotion of energy and environmental strategies

- Proposal for realizing the carbon-free society
- Promotion of further electrification
- Promotion of environmental actions through JEMA-GX report

# 2

### Creation of new markets through next generation technologies and innovation

- Development of low- and decarbonization technologies
- Creation of new service models based on digital technologies

# 3

### Intensification of technological infrastructures and international standardization toward global market expansion

- Establishment of strategic rules that match innovation
- Ensuring sustainable supply chain

## History

- 1936 An information exchange group of electrical machinery manufacturers reformed to a technology association
- 1940 The technology association renamed as the "Japan Electrical Machinery Manufacturers' Association."
- 1948 The "Japan Electrical Manufacturers' Association (JEMA)" established as a group in accordance with the former Trade Association Act (now part of the Antitrust Law) (The Head Office was in the "Nippon Electric Association Building" in Yuraku-cho, Chiyoda-ku, Tokyo)
- 1949 The "Japan Electrical Manufacturers' Association" merged, amalgamated and took over all missions of the "Japan Electrical Machinery Manufacturers' Association."

- 1954 JEMA had been authorized as an incorporated association.
- 1955 The Head Office moved to the "JEMA building" in Nagata-cho, Chiyoda-ku, Tokyo.
- 2004 The current "JEMA building" (Ichiban-cho, Chiyoda-ku, Tokyo) completed and the Head Office moved in.
- 2011 JEMA shifted to a general incorporated association for a new start.
- 2020 JEMA implemented a wide structural change of the departments.

# Areas of Business

## Leadership



### Planning and promotion of the sustainable development strategy in the electrical machinery industry

JEMA identifies relevant issues, such as formulating environmental assessment standards for upvaluing business operations, develops policy measures therefor, and implements them towards sustainable development of Japan's electrical machinery industry by contributing to building/enhancement of power/social infrastructures, industrial systems and QOL (Quality of Life) improvement of the people in Japan and oversea countries.



### Delivery of comments and proposals to the government policies

JEMA delivers productive comments and proposals proactively to the government policy organs and administrative bodies, concerning important policy issues including those for energy and environmental policies, stable power supply, product safety and recycling initiatives.



### Promotion of enlightening activities in handling electrical products

JEMA conducts enlightening activities for consumers, users and construction workers, activities for ensuring product safety, and promotes preventive measures against product accidents. JEMA also delivers recommendations and collaborative contribution to the government systems related to ensuring product safety.



### Promotion of statistics collection/analysis and market survey

JEMA collects and compiles relevant statistical data concerning production, shipment, exports/imports, sales of power equipment and home electrical appliances, renewable energy sources and nuclear power industry, based on the government production statistics, trade statistics and the JEMA voluntary statistics. JEMA also conducts extensive surveys in the Japanese and global markets.



### Publicity activities

JEMA conducts extensive information dissemination and public relation activities through its journal "DENKI," various publications, JEMA websites, and other media, encompassing statistical data of production, shipment, sales and others of electrical equipment, dissemination of product and safety information, release of energy and environment related issues, and various business reports.



DENKI pdf download page (in Japanese)

## Innovation



### Contribution and support to state-level technological R&D activities

JEMA contributes to, by participating in, the state-level technological R&D programs for the stable energy security, energy saving, global environmental preservation and others, while monitoring and analyzing the trend of technological development in Japan and other countries and disseminating the information as appropriate.



### Promotion of upgrading the national stable energy supply and utilization

JEMA is collaborating in the promotion of establishing the highly reliable energy supply systems based on "Safety" + "Stable Supply," "Economy," and "Environmental Conformity." On the energy demand side, JEMA is contributing to energy saving by developing energy efficient products, and also disseminating energy managing and optimizing systems for energy consumption.



### Contribution to the global environmental preservation

JEMA promotes the implementation of the Action Plan to Carbon Neutrality formation of a circulation society, measures to respond to the regulations on chemical substances, as well as voluntary activities for reducing environmental burdens for biodiversity conservation.



### Promotion of creating advanced manufacturing and service industry

As an industrial group promoting Society 5.0, Industrie 4.0 or IoT (Internet of Things), JEMA contributes to the realization of an industrialized society, in which new added-values can be created by connecting products and technologies, e.g., distributed energy resources management system (DERMS).



### Developing and securing human resources

JEMA engages itself with human resource development activities for securing human resources who will bear responsibilities for the electrical machinery industry in the generations to come: interest raising in science in educational fronts (science seminars for primary school teachers); or programs to introduce attractiveness and future prospects of the electrical machinery industry to science and engineering students.



### A leading-edge technology fair IIFES

JEMA arranges the IIFES (Innovative Industry Fair for E x E Solutions, former SCF/Mechanical and Control Show Tokyo), a leading-edge technologies general exhibition for automation and measurement, in collaboration with NECA (Nippon Electric Control Equipment Industries Association) and JEMIMA (Japan Electric Measuring Instruments Manufacturers' Association).



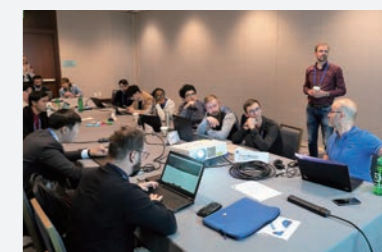
IIFES website

## Globalization



### Promotion of international standardization and conformity assessment

JEMA contributes to the improvement of qualities and technologies of electrical equipment and the realization of new systems and services by enacting and operating the JEMA standards (JEM) and also by involvement in the Japanese standardization (JIS), the international standardization (IEC, ISO), and other activities. JEMA is also engaged in establishing internationally harmonized conformity assessment such as the product certification system and in promoting its practice. JEMA's another mission is to develop human resources for strategically promoting international standardization.



### International exchange

JEMA is energetically involved in the activities of FAEMA and IRHMA: the FAEMA (Federation of Asian Electrical Manufacturers' Association) comprises six industrial associations of power and electrical machinery manufactures in the Asian and Pacific region, while the IRHMA (International Roundtable of Household Appliance Manufacturer Associations) provides a platform to exchange information and opinions among industrial associations for the home electrical appliances.



### Coordination in trade issues

JEMA works closely with the government for the establishment of Economic Partnership Agreements such as the FTA, EPA, RCEP as well as the WTO trade agreements (EGA, ITA and others), by integrating the opinions of the industrial sector. JEMA is also addressing various trade issues.

# Range of products

## Power and Industrial System Equipment

### Boilers and turbines for power generation

Boilers, Steam turbines, Gas turbines, Water turbines, etc.

### Motors and generators

AC generators, DC motors, AC motors, Servo motors, Small motors, Linear motors, etc.

### Motor-driven devices

Electric tools, Electric hoists, Electric blowers, etc.

### Stationary electrical machines

Transformers, Power converters, Inverters, Uninterruptible power systems, Electric welders, Electric furnaces, Reactors, Capacitors, Surge arresters, etc.

### Switchgears & switchgear control systems

Gas insulated switchgears, Metal-enclosed switchgears, Distribution boards, Remote supervisory control equipment, Low voltage switchgears and controlgears, Programmable controllers, High voltage switches, Low voltage circuit breakers, High voltage circuit breakers, Protective relays, Electromagnetic clutches, etc

## Nuclear Power Plant and Equipment

### Nuclear power plants

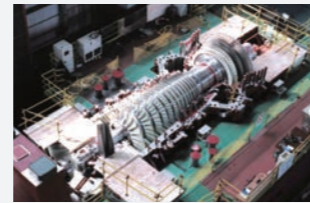
(including nuclear fusion facility)  
Accelerator systems

## New and Renewable Energy Generation System and Equipment

### Solar photovoltaic power generation systems

Wind energy generation systems  
Fuel cell power systems, etc.

Manufacturers List by Products



High efficiency gas turbine



Remote supervisory controller for electric power system control station



Premium efficiency motor (Top runner motor) Servo motor



Electric tools



High efficiency transformer (Top runner transformer)  
Left:Oil-immersed type Right:Molded type



Inverter for general purpose



550kV gas insulated switchgear



Programmable controller



Nuclear power plant (Sendai Nuclear Power Station)



Wind energy generation system (Photo thanks to Green Power Investment Corporation)



Photovoltaic power generation system (Shiga, Yabasekihantou mega solar power plant)



Power conditioning system



Fuel cell system

## Home Electrical Appliances

### Living environment and cooling / heating related equipment

Room air conditioners, Vacuum cleaners, Ventilating fans, Bathroom dryer fan, Fans, Air purifiers, Electric space heaters, Electric hot heating fans, Carpet-type heaters, Humidifiers, Water storage heaters, Toilet seats with washers or seat heats, Well pumps, Small pumps, Dehumidifiers, etc.



Room air conditioner



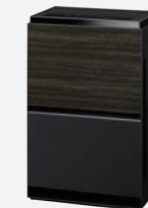
Vacuum cleaner



Bathroom dryer fan



Fan



Air purifier



Electric stove

### Kitchen devices

Refrigerators, Freezers, Microwave ovens, Rice cookers, IH cooking heaters, Combined juicers and blenders, Electric pots, Coffee makers, Toasters, Dishwashers, Bread machines, Electric griddles, Home raw garbage processing equipment, etc.



Refrigerator



Microwave oven



Rice cooker & warmer



Freezer



IH cooking heater



Electric Pot



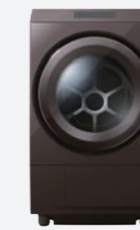
Toaster



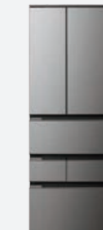
Dishwasher

### Home laundry equipment

Washing machines, Clothes dryers, Futon dryers, Irons, etc.



Washer & dryer



\* Image of the menu of refrigerator App  
Connected / Smart home appliance (ex. refrigerator)  
\* Room air conditioners, microwave oven, washing machines, rice cookers etc can be also connected to the Internet.

### Electrical personal appliances

Shavers, Hair clippers, Massagers, Depilators, Electric toothbrushes, Hair dryers, etc.



Electric toothbrush



Shaver



Hair dryer

### Connected / Smart home appliances

## Board of Directors

### Chairman

**Shiro KONDO**  
FUJI ELECTRIC CO., LTD.  
Representative Director  
Director and President  
Chief Operating Officer



Chairman  
Shiro KONDO

### Executive Vice Chairman

**Kei URUMA**  
Mitsubishi Electric Corporation  
Representative Executive Officer  
President & CEO

### President

**Tetsuya NAKAJIMA**

### Senior Vice President

**Masaaki YAZA**

### Directors

**Hiddenori GOTO**  
Nishishiba Electric Co., Ltd. Director, President and CEO

**Shinichi HIRANO**  
SINFONIA TECHNOLOGY CO., LTD. President

**Takashi ICHINOSE**  
TAKAOKA TOKO CO., LTD. President

**Atsushi ITAGAKI**  
FUJITSU GENERAL LIMITED Corporate Senior Vice President

**Hiroshi KANETA**  
Toshiba Corporation General Executive

**Kazuo KOBAYASHI**  
Aichi Electric Co., Ltd. President

**Kenji KOBAYASHI**  
NISSIN ELECTRIC CO., LTD. Managing Director

**Takeshi MIIDA**  
MEIDENSHA CORPORATION Representative Director, Chairperson and Senior Officer

**Yoshiyuki MIYABE**  
Panasonic Holdings Corporation Director, Executive Vice President

**Katsuhiko MORI**  
NICHICON CORPORATION President

**Jun NUKINA**  
Toyo Electric Mfg. Co., Ltd. Executive Officer

**Hiroshi OGASAWARA**  
YASKAWA Electric Corporation Representative Director, Chairman of the Board

**Masahiro OKITSU**  
Sharp Corporation President & Chief Executive Officer

**Tetsuya TAJIRI**  
DAIHEN Corporation Chairman

**Shinichi TOGAMI**  
Togami Electric Mfg. Co., Ltd. President

**Kenji URASE**  
Hitachi, Ltd. Executive Advisor for Energy Business

**Shinzo YAMADA**  
Taiyo Electric Co., Ltd. Chairman

**Motohiro YAMANISHI**  
OMRON Corporation Managing Executive Officer

**Tomoharu YASUDA**  
Makita Corporation Corporate Officer

**Tomohiko YOSHIDA**  
Koki Holdings Co., Ltd. Executive Officer

## Auditors

**Osami TSUKAMOTO**  
Yokohama National University Professor Emeritus

**Yoshihide WATANABE**  
Osaki Electric Co., Ltd. Chairman and CEO

**Shigeo YAMAMOTO**  
Sanjo Denki Co., Ltd. Representative Director, Chairman of the Board and Chief Executive Officer

## Chairman of the Branches

(Osaka) **Masato NISHIYAMA**  
OMRON HEALTHCARE Co., Ltd. Deputy Senior General Manager, Production Strategy HQ

(Nagoya) **Akitaka TEJIMA**  
NITTO KOGYO CORPORATION Managing Director

(Kyushu) **Hidetoshi SOEDA**  
SEIKO ELECTRIC CO., LTD. President and Representative Director

## Members

### Regular members

(186 Companies)

- A** Aichi Electric Co., Ltd.  
Aisin Corporation
- B** BEMAC Corporation
- C** Carrier Japan Corporation
- D** Daido Solderless Terminal Mfg. Co., Ltd.  
DAIHEN Corporation  
Daikin Industries, Ltd.  
DAISHIN INDUSTRIES LTD.  
Daito Communication Apparatus Co., Ltd.  
Danrey Kogyo Co., Ltd.  
DenGX Co., Ltd.  
DENSO Corporation  
Denyo Co., Ltd.  
DIAMOND & ZEBRA ELECTRIC MFG. CO., LTD.
- E** ELIY Power Co., Ltd.  
Energy Support Corporation  
Energywith Co., Ltd.
- F** Fuji Electric Co., Ltd.  
Fuji Electric FA Components & Systems Co., Ltd.  
Fuji Grinding Wheel Mfg. Co., Ltd.  
Fuji Logistics Co., Ltd.  
Fuji Terminal Industry Co., Ltd.  
Fujitsu General Limited.
- G** GBP K.K.  
GS Yuasa International Ltd.  
GS Yuasa Technology Ltd.
- H** Haier Asia R&D Co., Ltd.  
Hikari Trading Co., Ltd.  
Hitachi, Ltd.  
Hitachi Energy Ltd.  
Hitachi-GE Nuclear Energy, Ltd.  
Hitachi Global Life Solutions, Inc.  
Hitachi Industrial Equipment Systems Co., Ltd.  
Hitachi Industrial Products, Ltd.  
Hitachi Plant Construction, Ltd.  
Hitachi Power Solutions Co., Ltd.  
Hokuetsu Industries Co., Ltd.  
Hokuriku Electric Co., Ltd.  
Honda Motor Co., Ltd.
- I** IBARAKI DENKI KOGYO CO., LTD.  
ICHIKAWA CO., LTD.  
IHI Corporation  
IRIS OHYAMA INC.  
ITOH DENKI CO., LTD.
- J** Japan Switch board & Control System Industries Association  
Johnson Controls - Hitachi Air Conditioning  
JRCS Mfg. Co., Ltd.  
J.S.T.Mfg. Co., Ltd.
- K** Kamiuchi Electric Works, Ltd.  
Kanadevia Corporation  
Kaneka Corporation  
Kansai Denki Kogyokai  
Katsumata Electric Works Co., Ltd.  
Kawaden Corporation  
KAWAHIRA Electric Co., Ltd.  
Kawamura Electric Inc.  
Kawasaki Heavy Industries, Ltd.  
K.C.C. Shokai, Limited  
Kitani Electric Company Limited  
Kitashiba Electric Co., Ltd.  
Kito Corporation

- K** KODEN CO., LTD.  
Koizumi Seiki Corporation  
Koki Holdings Co., Ltd.  
KOMAIHALTECH Inc.  
Komatsu, Ltd.  
Kuwahata Electric Mfg. Co., Ltd.  
Kyocera Corporation  
KYOCERA Industrial Tools Corporation  
Kyoritsu Denki Seisakusho Co., Ltd.  
Kyoritsu Keiki Co., Ltd.  
Kyuden Technosystems Corporation  
KYUHEN Co., Inc.
- L** LIXIL Corporation  
LOGISTEED, Ltd.
- M** Makita Corporation  
MAX CO., LTD.  
Maxell Izumi Co., Ltd.  
Meidensha Corporation  
METAWATER Co., Ltd.  
METRO DENKI KOGYO CO., LTD.  
Mitsubishi Electric Corporation  
Mitsubishi Electric Engineering Co., Ltd.  
Mitsubishi Electric FA Industrial Products Corporation  
Mitsubishi Electric Home Appliance Co., Ltd.  
Mitsubishi Electric Plant Engineering Corporation  
Mitsubishi Electric Public Utility Equipment Corporation  
Mitsubishi Electric System & Service Co., Ltd.  
Mitsubishi Heavy Industries, Ltd.  
Mitsubishi Heavy Industries Thermal Systems, Ltd.  
Miyaki Electric Mfg. Co., Ltd.  
Murata Manufacturing Co., Ltd.
- N** NF Blossom Technologies, Inc.  
NF HOLDINGS CORPORATION  
NGK Insulators, Ltd.  
NHV Corporation  
Nichicon Corporation  
Nichicon (Kusatsu) Corporation  
Nichifu Terminal Industries Co., Ltd.  
Nihon Itomic Co., Ltd.  
Nikko Electric Mfg. Co., Ltd.  
Nippon Denki Co., Ltd.  
Nippon Denki Kenkyusho Co., Ltd.  
Nippon Hoist Co., Ltd.  
Nippon Kernel System Co., LTD.  
Nishimu Electronics Industries Co., Ltd.  
Nishishiba Electric Co., Ltd.  
Nissin Electric Co., Ltd.  
NITTO Kogyo Corporation

- O** Ohatsu Co., Ltd.  
OMRON Corporation  
OMRON HEALTHCARE Co., Ltd.  
OMRON SOCIAL SOLUTIONS CO., LTD.  
Osaki Electric Co., Ltd.  
Otowa Electric Co., Ltd.

- P** Panasonic Corporation  
Panasonic Ecology Systems Co., Ltd.  
Panasonic Entertainment & Communication Co., Ltd.  
Panasonic Environmental Systems & Engineering Co., Ltd.  
Panasonic Holdings Corporation  
Panasonic Industry Co., Ltd.  
Panasonic Operational Excellence Co., Ltd.  
Panasonic Switchgear Systems Co., Ltd.

- R** Rinnai Corporation  
Risho Kogyo Co., Ltd.

- S** San-Eisha, Ltd.  
Sanka Kogyo Co., Ltd.  
Sansha Electric Mfg. Co., Ltd.  
Sanso Electric Co., Ltd.  
Sanyo Denki Co., Ltd.  
Sawafuji Electric Co., Ltd.  
SBS Toshiba Logistics Corporation  
SDG CO., LTD.  
Seibu Electric & Machinery Co., Ltd.  
Seiko Electric Co., Ltd.  
Seikosha Mfg. Co., Ltd.  
Sengoku Works, Ltd.  
Sharp Corporation  
SHARP ENERGY SOLUTIONS CORPORATION  
SHIHEN TECHNICAL Corporation  
Shimadzu Corporation  
Shimomura Denyusha, Ltd.  
Shindengen Electric Manufacturing Co., Ltd.  
Shizuki Electric Co., Inc.  
SINFONIA ENGINEERING CO. LTD.  
SINFONIA TECHNOLOGY CO., LTD.  
SOC Corporation  
Solar Frontier K.K.  
Sumitomo Electric Industries, Ltd.  
Sumitomo Heavy Industries, Ltd.  
Suntech Power Japan Corporation

- T** Taiyo Electric Co., Ltd.  
TAKAOKA TOKO CO., LTD.  
TAKASU SANGYO., LTD.  
TAMURA CORPORATION  
Tempearl Industrial Co., Ltd.  
Terasaki Electric Co., Ltd.  
The Chugoku Electric Manufacturing Company, Incorporated  
The Furukawa Battery Co., Ltd.  
The Peacock Vacuum Bottle Co., Ltd.  
Tiger Corporation  
TMEIC Corporation  
TODA CORPORATION  
Togami Electric Mfg. Co., Ltd.  
Tohoku Electric Mfg. Co., Ltd.  
TOKYO DENSEI INDUSTRIAL CO., LTD.  
Tokyo Electric Industry Co., Ltd.  
Torishima Electric Works Ltd.  
Toshiba Corporation  
Toshiba Energy Systems & Solutions Corporation  
Toshiba Home Technology Corporation  
Toshiba Industrial Products and Systems Corporation  
Toshiba Infrastructure Systems & Solutions Corporation  
Toshiba Infrastructure Technology Service Co., Ltd.  
Toshiba IT & Control Systems Corporation  
Toshiba Lifestyle Products & Services Corporation  
Toshiba Schneider Inverter Corporation  
TOTO Ltd.  
Toyo Electric Mfg. Co., Ltd.  
Toyo Hoist Mfg. Co., Ltd.

- U** Utsunomiya Electric Mfg. Co., Ltd.

- Y** YAMABIKO CORPORATION  
YANMAR CONSTRUCTION EQUIPMENT CO., LTD.  
Yaskawa Automation & Drives Corp.  
YASKAWA Electric Corporation

- Z** Zojirushi Corporation

## Supporting members

(105 Companies)

- A** AIR WATER MATERIALS INC.  
Aqua Co., Ltd.  
AUX Japan Co., Ltd.
- B** Bloom Energy Japan Ltd.  
Bosch Corporation  
Bosch Rexroth Corporation
- C** Canadian Solar Japan K.K.  
Chemi-Con Device Corporation  
Chiyoda Kohan Co., LTD.  
Chugai Electric Industrial Co., Ltd.  
Cosmos Corporation
- D** Daiichi Electronics Co., Ltd.  
Daiwabo Co., Ltd.  
DELTA ELECTRONICS (JAPAN), INC.  
DELTA ENGINEERING CO, LTD.  
Denkishizai Co., Ltd.  
Dometic K.K.  
Du Pont Specialty Products Kabushiki Kaisha  
Dyson K.K.
- E** Eaton Electric (JAPAN) Ltd.  
Electrolux (Japan) Limited  
EPLAN Software & Services K.K.  
Eternalplanet Energy Japan K.K.
- F** FDK CORPORATION  
FUJI FURUKAWA ENGINEERING & CONSTRUCTION Co., Ltd.  
FUJI INDUSTRIAL SALES Co., Ltd.  
Fujitsu Limited
- G** Global Nuclear Fuel-Japan Co., Ltd.  
G-Place Corporation  
Groupe SEB Japan Co., Ltd.
- H** Haier Japan Holdings Co., Ltd.  
Haier Japan Sales Co., Ltd.  
Hanwha Japan CO., LTD.  
HARMAN Co., Ltd.  
Hilti (Japan), Ltd.  
HISENSE JAPAN CORPORATION  
Hitachi Building Systems Co., Ltd.  
Hitachi Industry & Control Solutions, Ltd.  
Hoei Denki Co., Ltd.  
Huawei Technologies Japan K.K.  
Hyoda Instruments Corporation
- I** ICAN COMPANY LTD.  
Inaba Denki Sangyo Co., Ltd.
- J** Jackery Japan Co., Ltd.  
Japan Audit and Certification Organization for Environment and Quality  
Japan Copper Development Association  
Japan Marine United Corporation  
JAPAN TABACCO INC.  
JA Solar Japan Limited  
JFE Electrical Steel Co., Ltd.  
JFE Steel Corporation  
JGC HOLDINGS CORPORATION  
Jin and Marry CO., Ltd.  
Jinko Solar Holding Co., Ltd.  
JUST Co., Ltd.
- K** Kanken Techno Co., Ltd.  
KEC CORPORATION  
KYODO KY-TEC CORP.
- L** LG Electronics Japan Inc.  
LONGi Solar Technology K. K.
- M** Midea Japan Corporation  
Miele Japan Corp.  
MITSUBISHI ELECTRIC BUILDING SOLUTIONS CO., LTD.  
MORITANI & Co., Ltd.  
MR Japan Corporation
- N** NEC Corporation  
Nestle Nespresso K.K.  
NICHIDEN Corporation  
NIPPON STEEL CORPORATION  
Nippon Tungsten Co., Ltd.  
N.TEC Co., Ltd.
- O** Ono Sokki Co., Ltd.
- P** P & G Japan G.K.  
Philips Electronics Japan, Ltd.  
Proterial, Ltd.
- R** RITTAL K.K.  
ROHM Co., Ltd.  
RYODEN Corporation
- S** Samsung R&D institute Japan Co. LTD.  
Sanshin Electric Corporation  
Sanyo Kogyo Co., Ltd.  
Saraya Co., LTD  
Schneider Electric Japan Inc.  
Seino Holdings Co., Ltd.  
Sekisui Chemical Co., Ltd.  
SMA Japan K.K.  
SolarEdge Technologies (Japan) Co., Ltd.  
Solax Power Network  
Sony Global Manufacturing & Operations Corporation  
SUGAHARA Co., Ltd.  
Sungrow Japan K.K.
- T** Takara Standard Co., Ltd.  
Takigen Mfg. Co., Ltd.  
TCL JAPAN ELECTRONICS Co., Ltd.  
TECO JAPAN (Sankyo Co., Ltd.)  
TOKYO GAS CO., LTD.  
TOYOTA INDUSTRIES CORPORATION  
Toyota Tsusho Corporation  
Trina Solar (JAPAN) Limited  
Tsunashima & Co., Ltd.  
TUV Rheinland Japan Ltd.
- W** WADA ELECTRICAL INSTALLATION LTD.  
Wind Energy Institute of Tokyo, Inc.
- Y** Yingli Green Energy Japan Co., Ltd.  
YOSHII ELECTRIC CO., LTD.

Latest members information can be found at  
[www.jema-net.or.jp/English/about/members/](http://www.jema-net.or.jp/English/about/members/)

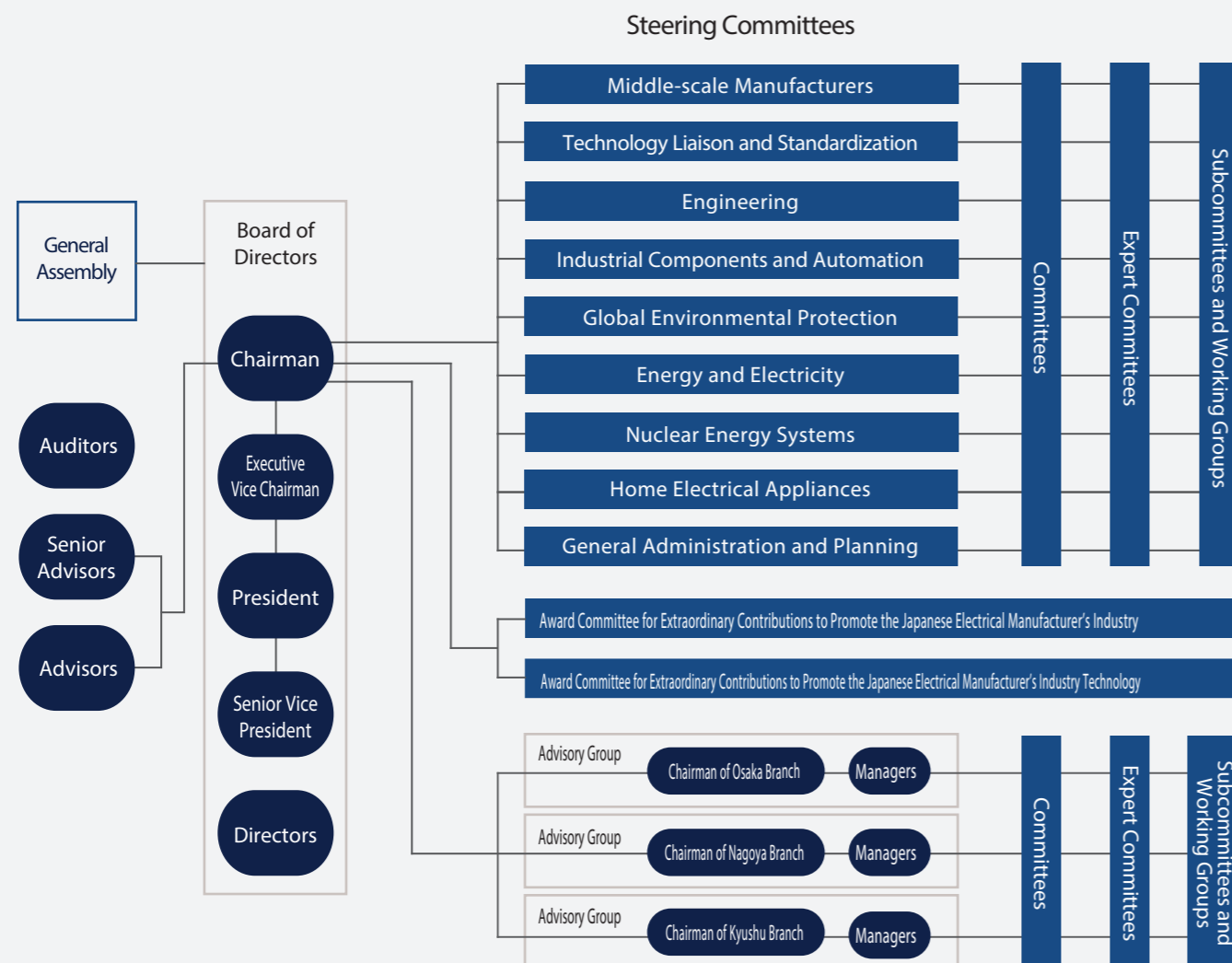


# Organization

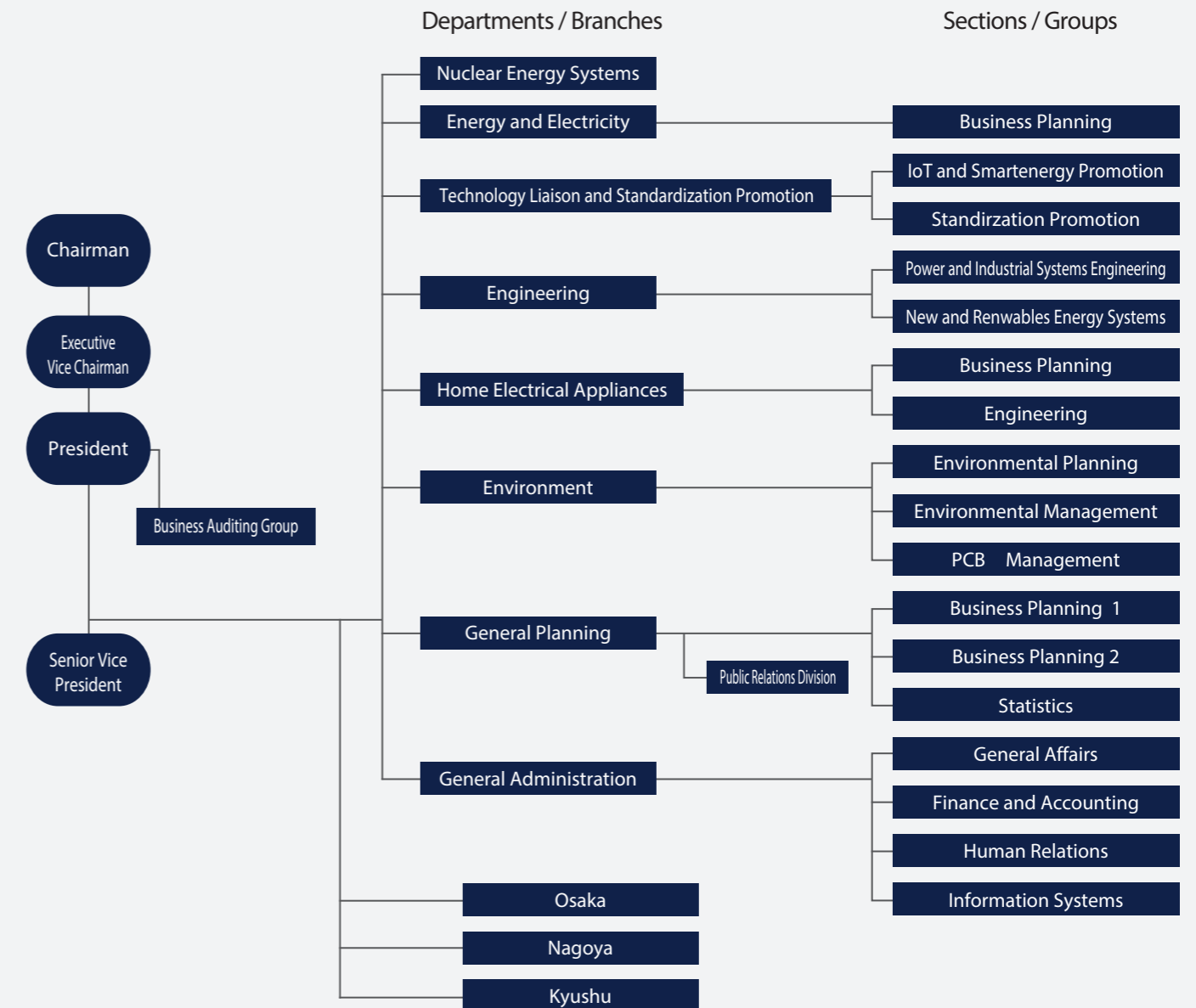
In order to conduct its business, JEMA has a wide range of committees that deal with many different fields, including the following;

- Committees related to products for heavy electrical industry, industrial systems and equipment, home electrical appliances, nuclear power and new and renewable energy sources
- Committees for areas of concern that include all industries, such as the environment and technology
- Committees for medium-sized companies and the financial aspects of corporate management

The committees are headed by steering committees, and there are various committees, expert committees, subcommittees, and working groups. Regular members can participate in committees related to the products they handle.



# JEMA Secretariat



## Head Office

17-4 Ichiban-cho Chiyoda-ku Tokyo 102-0082



	Phone	Fax
Nuclear Energy Systems	+81-3-3556-5886	+81-3-3556-5890
Energy and Electricity	+81-3-3556-5885	+81-3-3556-5890
Technology Liaison and Standardization Promotion	+81-3-3556-5888	+81-3-3556-5892
Engineering	+81-3-3556-5884	+81-3-3556-5890
Home Electrical Appliances	+81-3-3556-5887	+81-3-3556-5891
Environment	+81-3-3556-5883	+81-3-3556-5891
General Planning	+81-3-3556-5882	+81-3-3556-5892
General Administration	+81-3-3556-5881	+81-3-3556-5889

## Osaka

Chuo Denki Club 4th Fl  
1-25 Dojimahama 2-chome Kita-ku  
Osaka 530-0004  
Phone +81-6-6344-1061 Fax +81-6-6344-1837

## Nagoya

Nagoya Shokokaigisyo Bldg. 6th Fl  
10-19 Sakae 2-chome Naka-ku  
Nagoya 460-0008  
Phone +81-52-231-5211 Fax +81-52-231-5610

## Kyushu

Denki Bldg. North 10th Fl  
1-82 Watanabedori 2-chome Chuo-ku  
Fukuoka 810-0004  
Phone +81-92-761-4778 Fax +81-92-751-2094

# Joining JEMA

## Categories of Membership

### Regular Membership

A corporate entity involved in the manufacture and/or relevant businesses of electrical machinery and/or equipment in Japan, or an entity or organization consisting of these.

### Supporting Membership

An entity or organization that does not qualify for regular membership but agrees with the goals of JEMA and will cooperate with JEMA projects.

## Membership Privileges

### Participation in JEMA committees (Regular membership only)

Regular members can participate in committees related to the products they handle.

### Acquisition of the latest information on the Japanese electrical industry through

- IIFES (an every-other-year organized international exhibition for FA related control technology and equipment),
- JEMA lectures, seminars, and industry exchange meetings,
- Information from governmental agencies,
- JEM standards, technical reports, JEMA statistics with membership prices
- JEMA bulletin DENKI and JEMA annual report,
- Access to members-only portal

For more information on JEMA membership please contact us through Contact Form at [www.jema-net.or.jp/cgi-bin/contact\\_english/input.cgi](http://www.jema-net.or.jp/cgi-bin/contact_english/input.cgi)



## Access to Head Office

- Tokyo Metro Hanzomon Line  
Hanzomon station (Z05) Exit 4  
3 minutes walk
- Tokyo Metro Yurakucho Line  
Kojimachi station (Y15) Exit 3  
7 minutes walk

